

Dedication Program

G L E N S I D E E L E M E N T A R Y S C H O O L

H A R R I S O N A V E N U E A N D L I M E K I L N P I K E
C H E L T E N H A M T O W N S H I P , P E N N S Y L V A N I A

SEPTEMBER 30, 1956

Program

PRESIDING DR. LLOYD W. ASHBY, *Superintendent of Schools*

ADVANCING THE COLORS

"STAR SPANGLED BANNER" School Orchestra and Audience
MRS. HELEN WHITE AND MISS GLADYS TURNER

INVOCATION DR. CLARENCE E. MASON, *Vice-President and Dean,*
Faculty Philadelphia Bible Institute

INTRODUCTION AND ACKNOWLEDGMENTS

MAURICE C. WYATT	<i>President, Board of School Directors</i>
WILLIAM A. LONGSHORE	<i>Cheltenham Township School Authority</i>
JOSEPH L. HEACOCK	<i>Heacock & Platt, Architects</i>
B. BORNSTEIN	<i>B. Bornstein & Son, General Contractors</i>

PRESENTATION OF SCHOOL FLAG MRS. ARTHUR C. HOCH, *President of P.T.A.*

ACCEPTANCES

BEVERLY BAUHOF	<i>President, Student Council</i>
MALCOLM M. DERK	<i>Principal</i>
DR. CATHERINE E. GEARY	<i>Director, Elementary Education</i>

DEDICATORY PRAYER AND BENEDICTION REV. LOUIS E. FIFER, *All Hallows Episcopal Church*

Board of School Directors

Maurice C. Wyatt, *President*
Francis L. Markley, *Vice-President*
William B. Yoder, *Secretary*
George L. Lambert, *Treasurer*
Alice Brandeis
Earl Cunerd
Leopold von Seldeneck

Cheltenham Township School Authority

Harold S. Ashworth, *Chairman*
William Longshore, *Vice-Chairman*
Richard C. Kelley, *Secretary*
Ralph Morgan, *Treasurer*
Ray W. Bair, *Member*

Contractors

B. Bornstein & Son
John C. Kohler
E. J. Carney, Inc.
Power Electric Company
Tri-County Construction
Arbycraft Company

The Glenside School

The new Glenside School, located at Limekiln Pike and Harrison Avenue, is the fourth elementary school building erected since 1948 by the Board of School Directors. Other recently constructed elementary schools are Wyncote, 1949; Lynnewood, 1952; and Cheltenham Elementary, 1953. Elkins Park Junior High School, another major project, was completed in 1954. These projects have been necessitated by a school population which has almost doubled since 1950—from 3000 in 1950 to about 5800 currently enrolled.

The Glenside School is located on a tract of 13.89 acres, purchased from the estate of Mr. and Mrs. Thomas Kenworthy in 1952. The building, an E shape design, faces Limekiln Pike, with the main entrance off Harrison Avenue. The building was designed by the firm of Heacock and Platt, Philadelphia, and the general contract was awarded January 27, 1955, to B. Bornstein & Son. Work on the project started almost immediately.

The building contains eighteen regular classrooms, two kindergarten rooms, one art-music room, one special purpose room, one library room, an assembly room, a cafeteria, a health unit and a teachers' room. The building will comfortably house 530 pupils in the elementary grades and another 100 in the kindergarten. The building is not designed for additions, as this is the maximum size considered desirable for an elementary school.

In the rear of the building is a paved play space which can be used as an all-weather play area. A distinctive feature is a separate paved play area for kindergarten groups to which access is gained directly from the kindergarten rooms.

The exterior design is modified Colonial, similar to that of our new elementary schools, and the building is one-story in height. It is virtually fire proof, being constructed of reinforced concrete, steel, brick, and cinderblock. Woodwork is in natural finish, while the walls are painted in soft pastel colors. Ceilings are acoustical tile, and the floors are of asphalt tile in attractive colors.

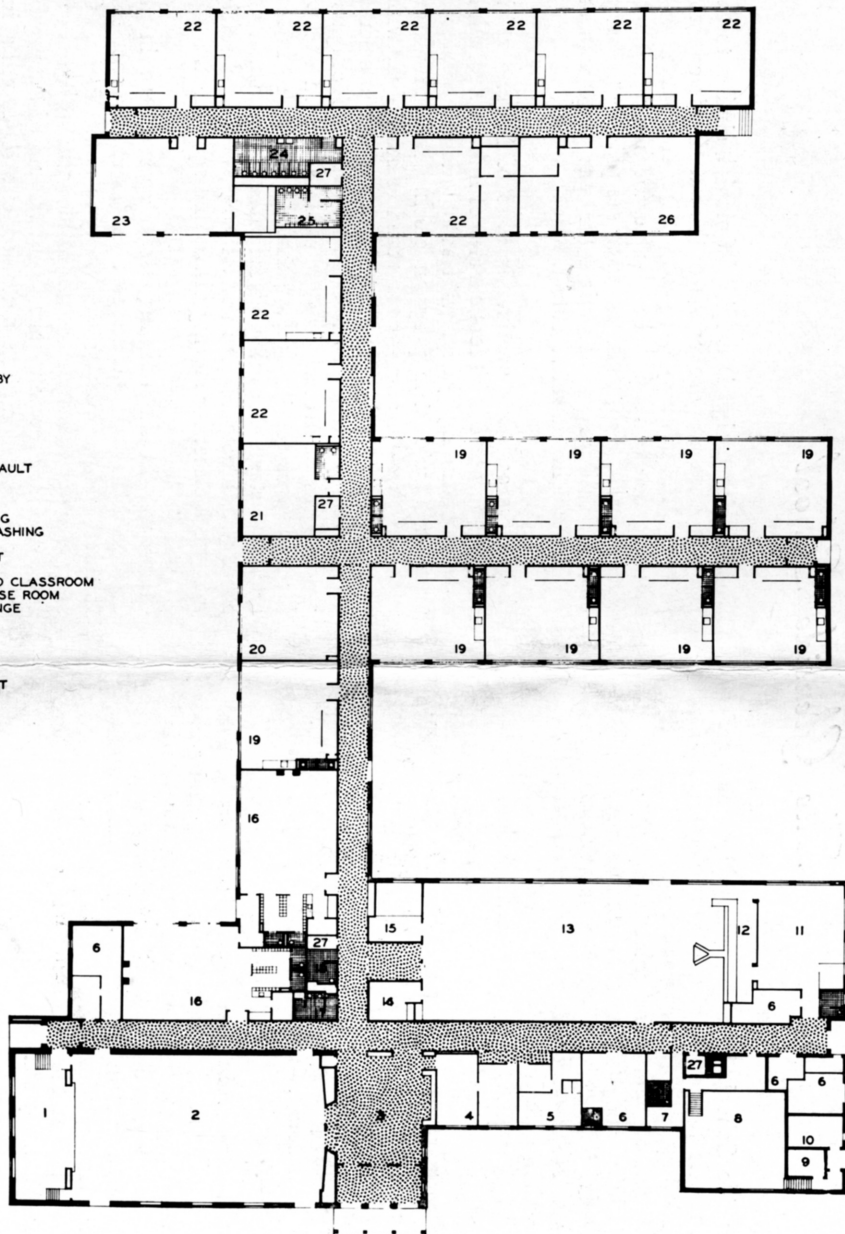
Each classroom has continuous rows of fluorescent lights, designed to provide 30 foot candles of light at the desk level, a unit ventilating system with automatic temperature controls, and an electric program clock. Built-in wardrobes are in each classroom, and a stainless steel sink, with hot and cold running water, is built in at the rear of each room. The assembly room has a large stage with footlights and borderlights controlled from a switchboard in the wings. Storage space for the folding chairs is provided in lockers under the stage. Opening off the cafeteria is a small service room with a combination unit of sink, stove, and refrigerator, and a closet for storing dishes and equipment.

Classrooms in the building are almost square in shape. This provides two advantages: a better arrangement for instructional purposes and economy in construction. Other special features include the use of the bulletin board screening device for the wardrobe areas, the use of the peg board in each room, and self-contained classroom units in the lower cycle.

The construction contracts, not including cost of site, equipment, or architects' fees, total \$909,061.

LEGEND

- 1 PLATFORM
- 2 AUDITORIUM
- 3 ENTRANCE LOBBY
- 4 ADMINISTRATION
- 5 HEALTH
- 6 STORAGE
- 7 ENGINEER
- 8 BOILER ROOM
- 9 METER ROOM
- 10 TRANSFORMER VAULT
- 11 KITCHEN
- 12 SERVING
- 13 CAFETERIA
- 14 TEACHERS DINING
- 15 CARTS & DISHWASHING
- 16 KINDERGARTEN
- 17 WOMENS TOILET
- 18 MENS TOILET
- 19 SELF CONTAINED CLASSROOM
- 20 SPECIAL PURPOSE ROOM
- 21 TEACHERS LOUNGE
- 22 CLASSROOM
- 23 LIBRARY
- 24 GIRLS TOILET
- 25 BOYS TOILET
- 26 ART & MUSIC
- 27 JANITORS CLOSET



10 0 10 20 30 40
FEET
SCALE